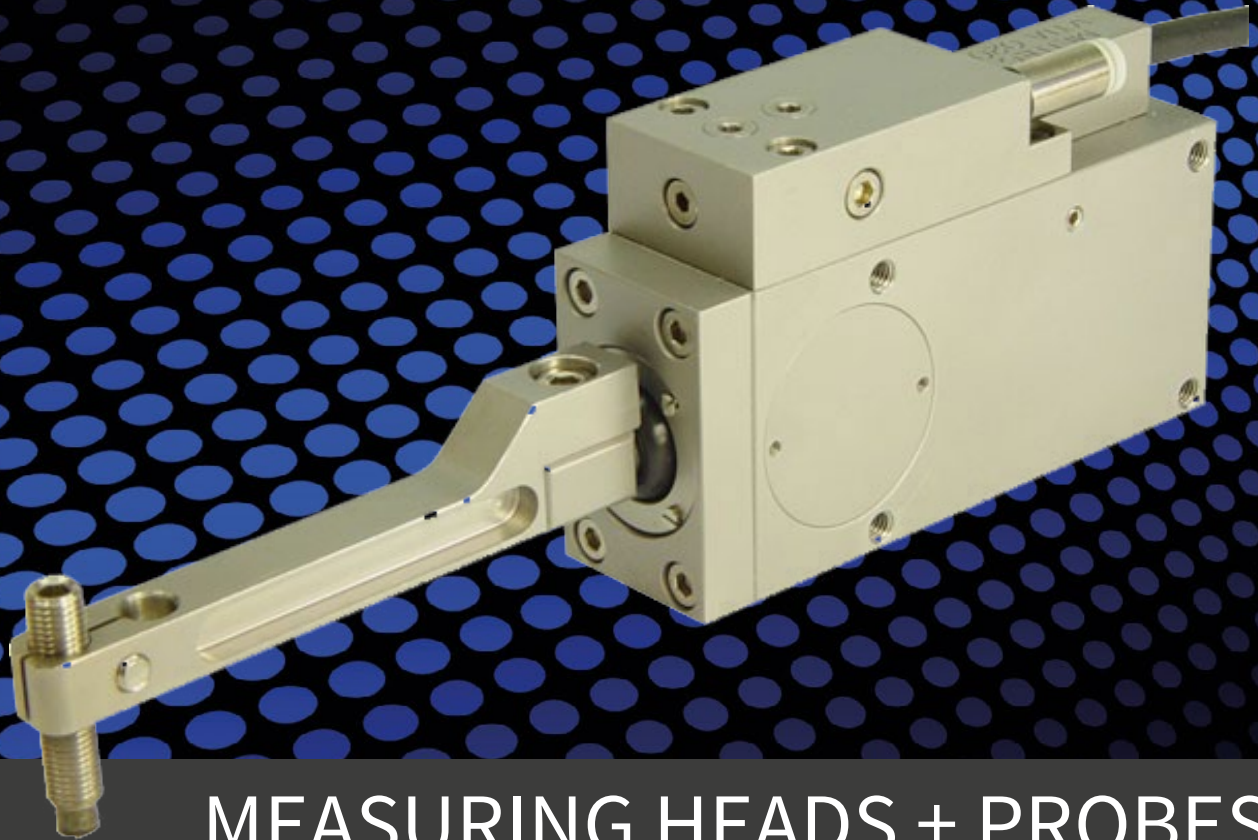


MEITEC

MESS- & REGELTECHNIK

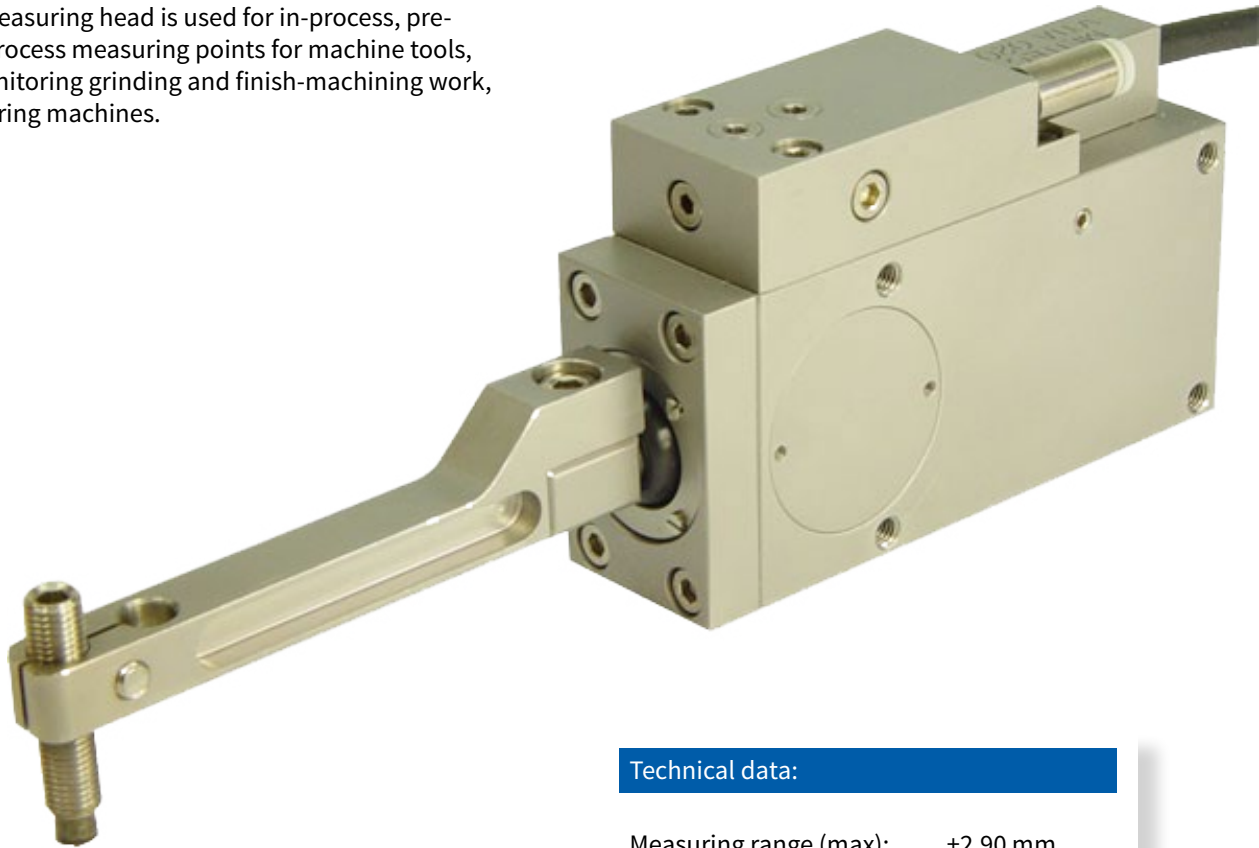


MEASURING HEADS + PROBES

Single-point measuring heads
Diameter measuring heads
Grinding wheel measuring heads
Axial measuring head
Axial probes
Probe arms and probe tips

Single-point measuring head EMK

The MEITEC EMK measuring head is used for in-process, pre-process and post-process measuring points for machine tools, for example for monitoring grinding and finish-machining work, as well as in measuring machines.



The internal pneumatic or hydraulic probe lifting protects the measuring device during positioning and loading operations.

Due to the excellent linearity and precision, the MEITEC EMK can be operated directly on the workpiece to be machined, or, to achieve precise axis positions, directly on the tool. The internal damping of the sensor provides highest measurement accuracy, even on workpieces and tools with interruptions.

For recording measurements, numerous probe arms and probe tips from the MEITEC product range can be combined with the single-point measuring head. Of course, customized probe arms and probe tips are also available upon request.

Technical data:

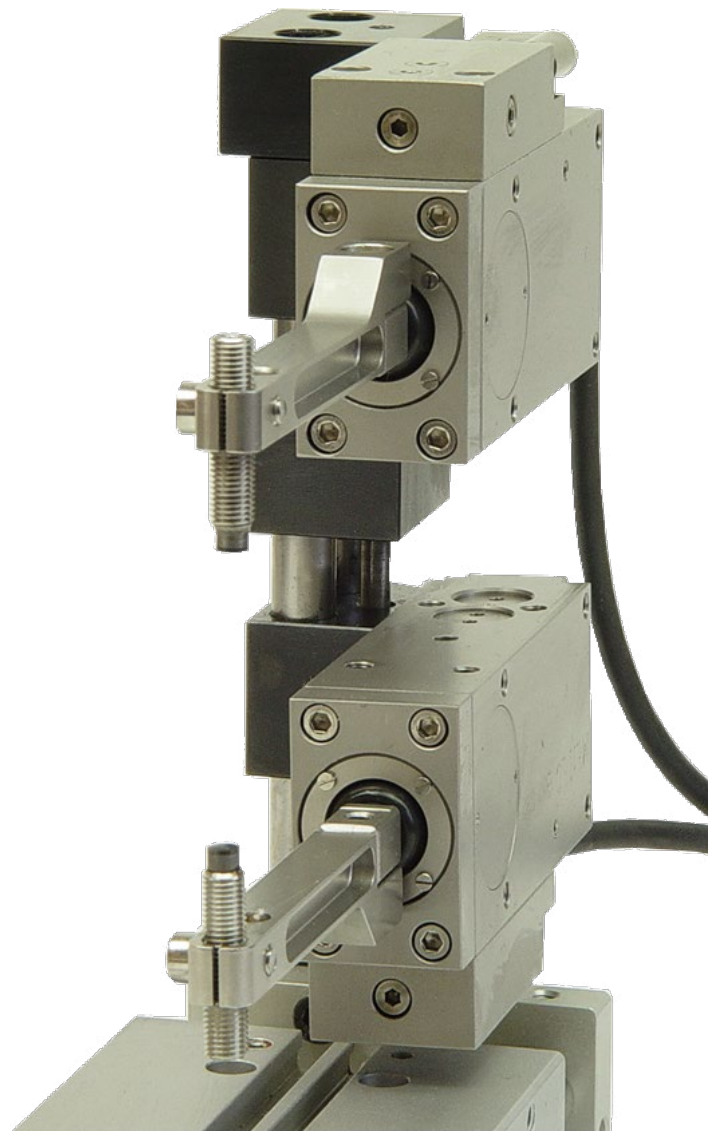
Measuring range (max):	±2.90 mm
Linearity error:	< 0.2 %
Zero repeatability:	< 0.1 µm
Internal probe lifting:	±3.0 mm
Hyd. /pneum. probe lifting (depending on application):	3.5 ... 6.0 bar
Measuring force (adjustable):	0.9 ... 2.0 N
Hydraulic damping:	yes
Protection class:	IP67
PUR-connection line:	3 m
Plug connection for hose diameter:	Ø 3.0 mm
Position lever arm unpressurized:	down/bottom

Diameter measuring head DMK

The measuring head MEITEC DMK is used everywhere where highly accurate inner and outer diameters are required.

Through installation of the DMK in standard or customized adjustment elements, diameters from a few millimetres to a few centimetres can be measured accurately. The excellent accuracy is achieved by using the proven technology of the MEITEC EMK.

MEITEC DMK also has a variety of probe tips and probe arms available in its product range for recording measurements. Customer-specific solutions and assembly on measuring head retraction units can be implemented



Technical data:

Standard measuring range: 2.0 ... 100,0 mm
(expandable by attachments)

Measuring range (max): ±5.8 mm

Linearity error: < 0.2 %

Zero repeatability: < 0.2 µm

Internal probe lifting: ±3.0 mm

Hyd. /pneum. probe lifting
(depending on application): 3.5 ... 6.0 bar

Measuring force (adjustable): 0.9 ... 2.0 N

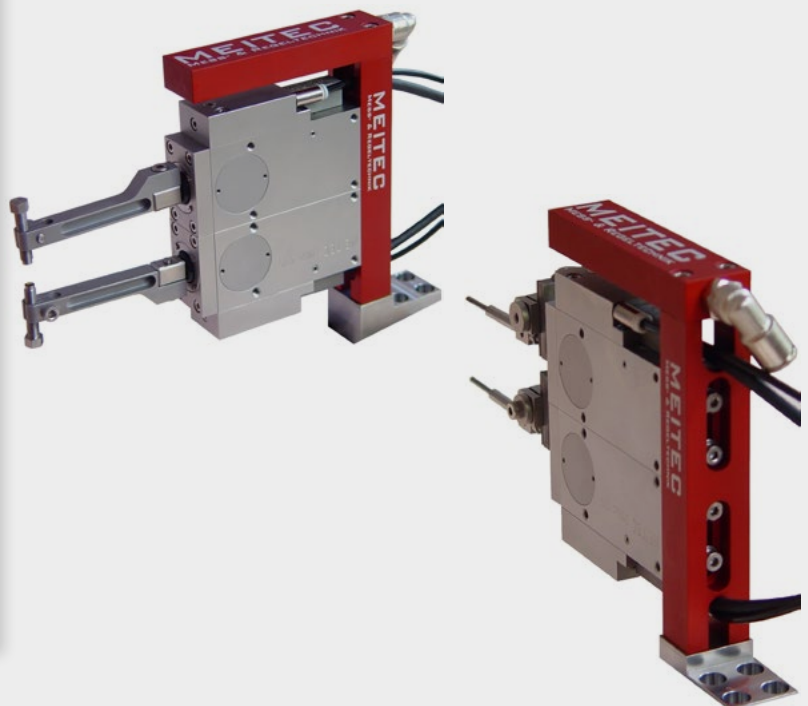
Hydraulic damping: yes

Protection class: IP67

PUR-connection line: 3 m

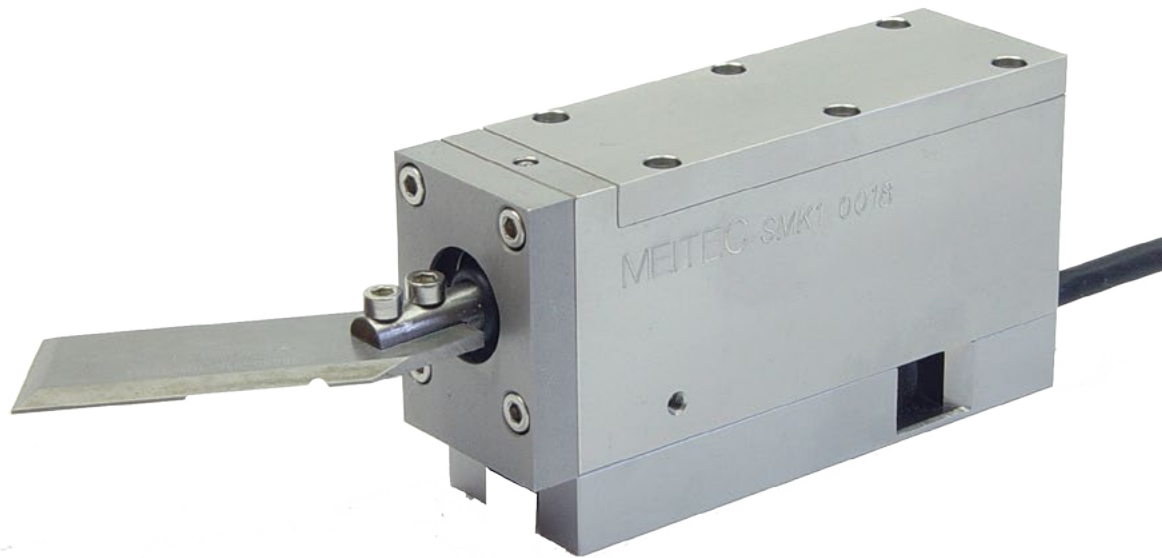
Plug connection for hose
diameter: Ø 3.0 mm

Position lever arm
unpressurized: down/bottom



Grinding wheel measuring head SMK

The main application area of the grinding wheel measuring head SMK is in-process measurement points directly at the rotating tool of grinding machines. In this application, wear monitoring and exact positioning of tools is implemented.

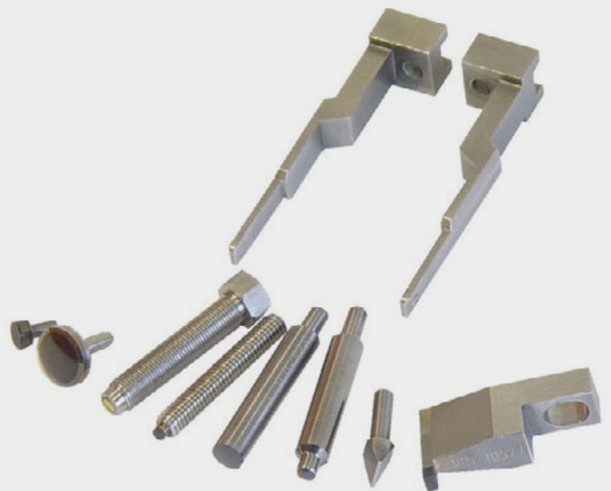


Probe arms and probe tips

MEITEC offers a wide range of probe arms and probe tips for use on MEITEC measuring heads, but also for use in some external systems.

In addition, MEITEC provides implementation of customer-specific solutions for probe tips and probe arms. Construction here can be either performed directly by the customer or, according to customer requirements, by MEITEC, using state-of-the-art 3D CAD systems.

All MEITEC probe tips are usually manufactured with measuring surfaces made of carbide, PCD and natural diamond.



Axial measuring head AMK

Due to its robust construction, the measuring head MEITEC AMK1 can be integrated in the work area of machine tools and measuring machines.



Technical data:

Linearity error:	$\leq 0,2\%$ (+/- 500 μm)
Zero repeatability:	$\leq 0,1\ \mu\text{m}$
Internal propulsion:	spring-operated
Measuring range:	depending on model +/-1mm or +/-2mm
Protection class:	IP 65 (measuring head), IP67 (cable outlet)

Axial probe MT

Axial probes from the MEITEC MT Series are highly reliable linear inductive sensors. MEITEC MT axial probes as well as MEITEC measuring heads are ideal supplements to MEITEC measuring controls and MEITEC inductive amplifiers.



Technical data:

Internal propulsion:	spring-operated or pneumatically
Measuring range:	depending on the model +/-1mm +/-2mm or +/-3mm

MEITEC
MESS- & REGELTECHNIK

MEITEC Mess- & Regeltechnik GmbH

Do you require precise measurements?
Are you looking for a competent partner to solve your specific measuring tasks?
Do you need a reliable repair of your measuring equipment?
Do you have any questions about our products?
Please contact us..

MEITEC Mess- & Regeltechnik GmbH
Neheimer Str. 10
59469 Ense
Germany

Contact:
Tel: +49 (0) 2938 61 30 – 275
Fax: +49 (0) 2938 61 30 – 002
meitec@meitec-messtechnik.de

Your contact person:
Dipl.-Ing. (FH) Markus Winkens
m.winkens@meitec-messtechnik.de

